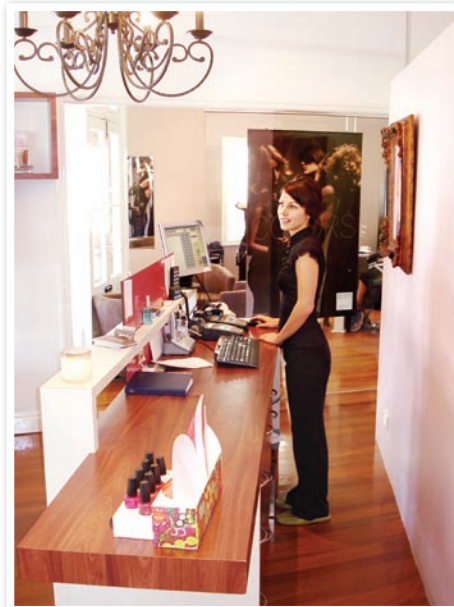


News and Specials

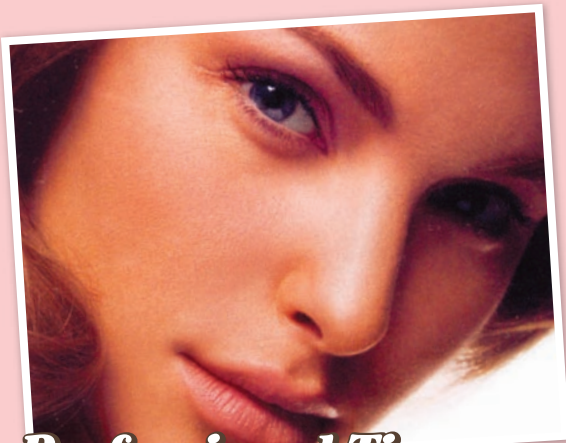


girls night out
men
girls night out
professional tips

girls night out
cpl
botox
and more!

Girls Night Out

Organise a group of friends for a "GirlsNight Out." Each of you will receive a **Spa Maincure & Pedicure**, and a **makeup lesson**. If you need an overhaul before the summer season hits this is for you. 2½ hours of pure girl fun **includes champagne, chocolate and a take home gift pack**. \$165 (min 3 people).



Professional Tip

Eyebrows designed by the professional is the best way to avoid mistakes. But you can maintain the clean finish in between waxes. Always have **good tweezers** on hand to pluck out the strays. **Brow gel** keeps the hairs in place and is a great cheat to neaten brows in need of reshaping. Always choose a **brow pencil a shade or two lighter** than you think you would need. Ask your therapist.

Brow Gel \$29.00

Tweezers from \$14.95 to \$25.00

Brow Pencil \$29.00

emerginC

Fans such as Jennifer Aniston, Halle Berry and Sandra Bullock treat themselves to cosmeceutical range **emerginC** for it's mix of **medical-grade ingredients, plant-based preservatives** and the recommendations it gets from dermatologists around the globe.

The star-favourite line has just released some new products – **Aromatic Cream Tea cleanser (\$58)**, a gentle cream containing green, white and red tea extracts, and night treatment **Multi-Vitamin and Retinol Serum (\$139)** that helps increase cellular turnover, strengthens the skin and hydrates.



emerginC eye serum

A lightweight vitamin C eye serum designed to target fine lines and crows feet around the eye area.

Skin types: All skin types.

Use: 1-2 times daily.

Results: Fights the signs of aging, targets fine lines and crows feet and helps to reduce puffiness.

Active Ingredients: 7% L-ascorbic acid (vitamin C), chamomile, white hazel, hyaluronic acid, matiftime pine bark extract.

Application tips: Avoid direct contact with eye. Follow with hyper-vitalizer eye cream.

It has now been two years since we launched the emerginC range at In Therapy. It offers a remarkably effective, result oriented cosmeceutical grade product. Clients using emerginC are overwhelmed by the visable results. The eye serum above is just one of the amazing products emerginC offers. **Book now for a emerginC facial for \$125** and receive a **complimentary Spa Manicure** (offer ends 30th Septmber 2007).



Men are a problem!

Men - they are such a problem! Buy the man in your life a **Gift Voucher** for Fathers Day, Birthday or Christmas. **Facials** and **Massage** are the most popular.

September Promo

Through September, all 500ml cleansers will come with a 15ml PreCleanse on-pack!



Parking

The parking situation has now improved with completion of three properties surrounding the salon. Remember you can park on the concrete block at the rear of the salon in Jay Street. Just park behind the cars that are there – they are staff cars and won't need moving.

Lip LOGIC

In Therapy recommends **Janet Price** at **Lip Logic** for all your **Botox** and **Collagen** needs. Janet has been injecting for over 15 years and is simply the **BEST!**

JANET PRICE
Registered Nurse
3236 5000
Suite 309, Level 2
Saint Andrews Place
33 North Street,
Spring Hill, 4000

Visit us online - www.intherapy.com.au

CPL

Both the pleasures and stress of life, along with the simple passage of time tend to cause our skin to appear older. **Controlled Pulse Light (CPL)** can **erase skin damage** and permanent hair reduction and simultaneously treat a wide variety of concerns safely and effectively, so you no longer have to live with these imperfections!

The Novalight is able to deliver a single double and triple pulse mode, which gives the system the ability to deliver a controlled pulse light energy, rather than a condensed beam of light like other systems. The cooling system designed especially for the Novalight eliminates the pain factor and provides maximum results.

Method of Delivery:

- The single pulse mode works effectively on **hair removal**, pigmented lesions and some vascular lesions.
- The double pulse mode is also used for hair removal, although delivered over a double pulse, is less aggressive on the skin and therefor **suites for darker skin types**.
- The triple pulse mode activates near the infrared in the light spectrum for deep penetration into the dermis for **collagen stimulation**.

If you want to know more about CPL just ask one of our friendly consultants!



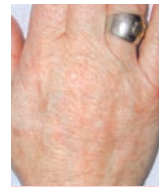
Before Treatment



After Treatment



Before Treatment



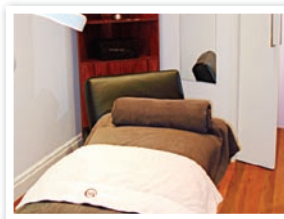
After Treatment



skin, body and hair

07 3369 5000

44 Enoggera Terrace, Red Hill
Open Monday to Saturday



skin therapy

vit.c anti-aging treatments

renewal peels

eyezone therapy

ipl rejuvenation

precision eyebrows

all body waxing

laser hair removal

salt scrubs

body wraps

massage

spa manicure & pedicure

fantasy spray tan

lash extensions

cosmetic tattooing

style cuts and colours